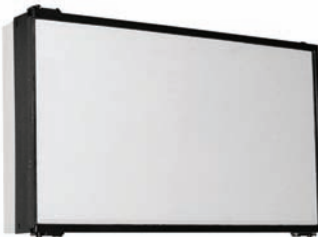


Affordable TI/EI-Class Connectivity...in an Ultra-Portable Form

thinkom is a leading provider of innovative highly-affordable compact antenna solutions for man-portable applications; *thinPack*® is the antenna of choice.

thinkom's thinPack® products enable broadened near-term availability of ultra-portable TI/EI-Class data rate X, Ku and Ka services for the commercial, civil, intelligence, special ops, and military communities. *thinPack*® is available in single (40-50 cm dish equiv.) and dual panel (55-75 cm dish equiv.) configurations.



thinPack® KU100 (Ku-Band)
(FCC/ITU - Compliant)



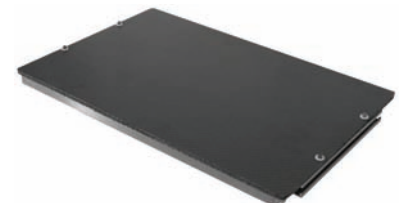
thinPack® KKA100 (K/Ka-Band)
(FCC/ITU/164 - Compliant)



thinPack® X100 (X-Band)



thinPack® X200 (X-Band)
(DISA/ARSTRAT/XTAR Certified)



thinPack® K100RO (Ka-Band)

Manportable Broadband Communications...Anywhere



Affordable TI/EI-Class Connectivity...in an Ultra-Portable Form

Typical Performance

	thinPack® X100 X-Band Single-Panel	thinPack® X200 X-Band Dual-Panel	thinPack® KU100 Ku-Band Single-Panel	thinPack® KU100i Ku-Band Single-Panel	thinPack® KKA100 Ka-Band Single-Panel	thinPack® K100RO Ka-Band(RO) Single-Panel
Receive Band (GHz)	7.25-7.75	7.25-7.75	10.95-12.75	10.95-12.75	18.7-21.2	19.2-21.2
Transmit Band (GHz)	7.90-8.40	7.90-8.40	13.75-14.50	13.75-14.50	29.0-31.0	N/A
Receive G/T (dB/K)	6.5*	9.0*	9.0*	11.5*	13.0**	14.0*
Transmit Gain (dBi)	28.0*	30.5*	31.5*	32.0*	38.5**	N/A
GEO-Plane Beamwidth (Tx)	5.6°	4.2°	3.2° (3.5°)	3.0° (V), 5.3° (H)	1.5°	1.5°
1st SLL (GEO-Plane, Tx)	-23 dB	-23 dB	-16 to -24 dB	-14 to -18 dB	-25 dB	-25 dB
Tx/Rx Isolation	85 dB	85 dB	85 dB	85 dB	80 dB	N/A
Regulatory Compliance	FCC 25.222, ITU 728-R, CFR47, 164A					N/A

* G/T and Gain Metrics Include Tx/Rx Filter and SMA Adapters

** G/T and Gain Metrics Include Tx/Rx Filter (Waveguide Ports)

Features and Benefits

Extremely Compact, Rugged, Lightweight, and "Unobtrusive"

- 24 cm x 39 cm single-panel form-factor
- 2-3(5) Kg antenna weight (depending on band, config.)
- No assembly or loose parts (integrated W/G filtering)
- Dual-Panel versions fold in half for "instant" deploy/store

Superior Efficiency, Versatility, and Data Rate Capability

- Equivalent to 40-75 cm parabolic
- Polarization diverse (selectable dual-cp, dual-linear)

Superior Satellite Interoperability and Operating Economy

- Sidelobe mask equivalent to 75-100 cm parabolic
- Waveform spreading is minimized (high Bit/Hz efficiency)

Available in X-, Ku-, Ka- (RO), and Ka (Tx/Rx) Versions

Users and Applications

Enterprise/Commercial

- Oil and gas, insurance, SNG, security

First Responders

- On-scene coordination, back-haul

Government

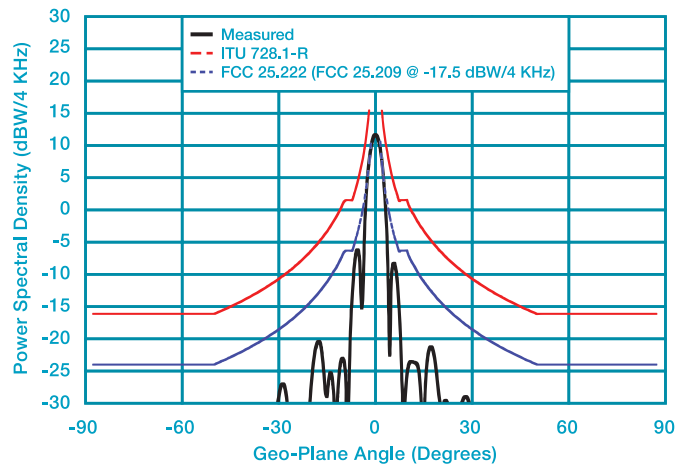
- Disaster recovery and mobile field ops

Military

- Fast-reaction, forward-deployed units

thinkom

A Revolution in Antennas™



thinPack® KU100 (Ku-Band)